

PILOTdrive-1 contrôleur tactile de puissance



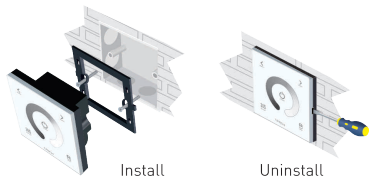
PILOTdrive-1



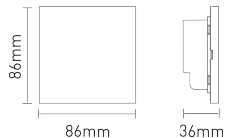
1. Caractéristiques techniques :

- Tension d'entrée : 12-24V DC
- Charge maximale : 4Ax3 Ch MAX 12A
- Echelle du dimmer : 5%-100%
- Puissance maximale : 144W/288W(12V/24V)
- Température min/max : -30°C à 55°C
- Dimensions : L86xW86xH36(mm)
- Poids brut : 208g

2. Instruction de montage :



3. Dimensions :



4. Fonctions principales :



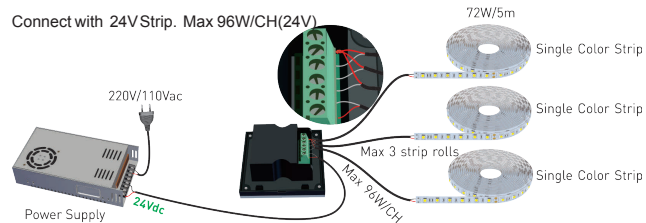
* Appui long pour allumer ou éteindre le buzzer

5. Bornier de connection :



Entrée alimentation Sortie pour ruban à LED blanc

6. Schéma de câblage :





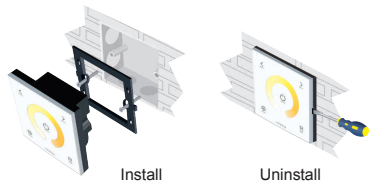
PILOTdrive-2



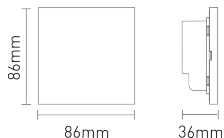
1. Caractéristiques techniques :

- Tension d'entrée : 12-24V DC
- Charge maximale : 4Ax2 Ch MAX 8A
- Puissance maximale : 96W/192W(12V/24V)
- Température min/max : -30°C à 55°C
- Dimensions : L86×W86×H36(mm)
- Poids brut : 208g

2. Instruction de montage :



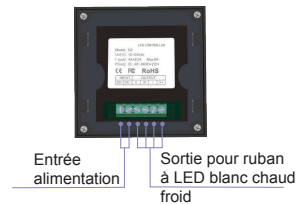
3. Dimensions :



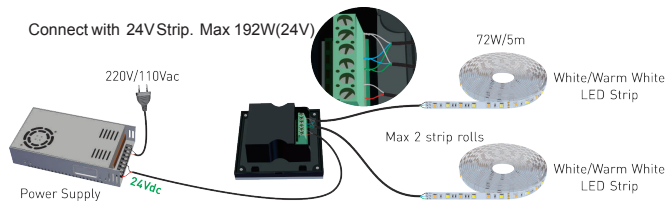
4. Fonctions principales :



5. Bornier de connexion :



6. Schéma de câblage :



PILOTdrive-3 contrôleur tactile de puissance



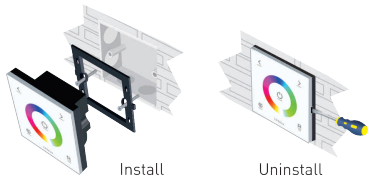
PILOTdrive-3



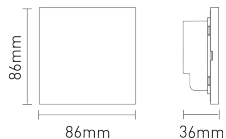
1. Caractéristiques techniques :

- Tension d'entrée : 12-24V DC
- Charge maximale : 4Ax3 Ch MAX 12A
- Puissance maximale : 144W/288W(12V/24V)
- Température min/max : -30°C à 55°C
- Dimensions : L86xW86xH36(mm)
- Poids brut : 208g

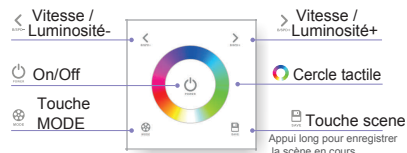
2. Instruction de montage :



3. Dimensions :



4. Fonctions principales :

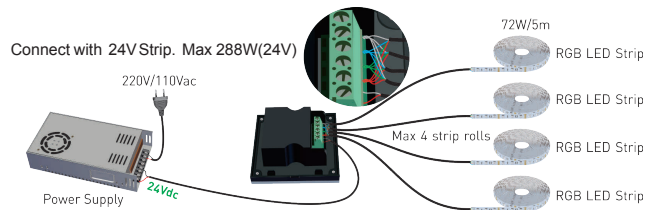


* Appui long pour allumer ou éteindre le buzzer

Changement de Mode (appui pour changer)

- A. Rouge fixe B. Vert fixe C. Bleu fixe D. Jaune fixe E. Violet fixe F. Cyan fixe
G. Blanc fixe H. Change RGB I. Change 7 couleurs J. Fade RGB K. Fade 7 couleurs

6. Schéma de câblage :



5. Bornier de connection :



PILOTdrive-4 contrôleur tactile de puissance



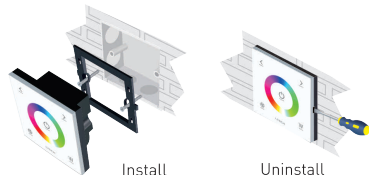
PILOTdrive-4



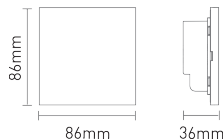
1. Caractéristiques techniques :

- Tension d'entrée : 12-24V DC
- Charge maximale : 4Ax4 Ch MAX 16A
- Puissance maximale : 192W/384W(12V/24V)
- Température min/max : -30°C à 55°C
- Dimensions : L86xW86xH36(mm)
- Poids brut : 208g

2. Instruction de montage :



3. Dimensions :



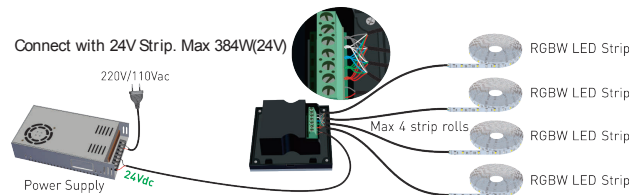
4. Fonctions principales :



- * Appui long pour allumer ou éteindre le buzzer
- Change ment de Mode (appui pour changer)

- A. Rouge fixe B. Vert fixe C. Bleu fixe D. Jaune fixe E. Violet fixe F. Cyan fixe
- G. Blanc fixe H. Change RVB I. Change 7 couleurs J. Fade RVB K. Fade 7 couleurs
- L. Noir fixe (éteint RVB)

6. Schéma de câblage :



5. Bornier de connection :



PILOTdrive-1 touch panel user guide



PILOTdrive-1

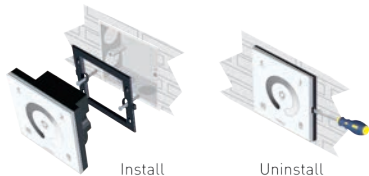


1. Technical Specs:

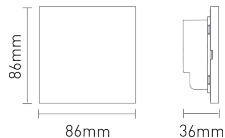
- Input Voltage: 12-24Vdc
- Load Current: 4A×3CH Max 12A
- Dimming Range: 5%-100%
- Max Output Power: 144W/288W(12V/24V)

- Working Temp.: -30°C~55°C
- Dimensions: L86×W86×H36(mm)
- Package Size: L113×W112×H50(mm)
- Weight(G.W): 208g

2. Installation Instruction:



3. Product Size:

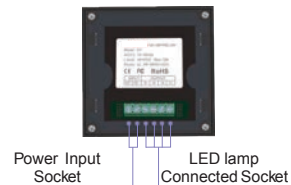


4. Key Functions:

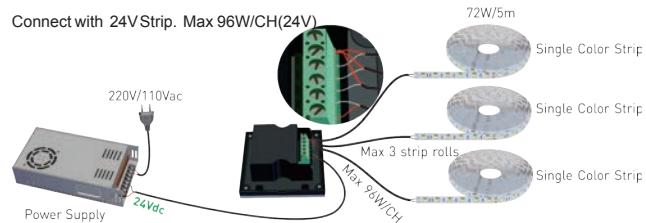


* Long press to turn on/off the tone.

5. Green Block:



6. Wiring Diagram:





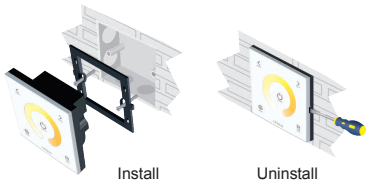
PILOTdrive-2



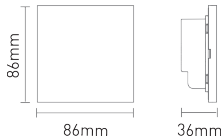
1. Technical Specs:

- Input Voltage: 12-24V dc
- Load Current: 4A×2CH Max 8A
- Max Output Power: 96W/192W(12V/24V)
- Working Temp.: -30°C~55°C
- Dimensions: L86×W86×H36(mm)
- Package Size: L113×W112×H50(mm)
- Weight(G.W.): 208g

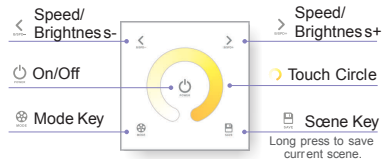
2. Installation Instruction:



3. Product Size:

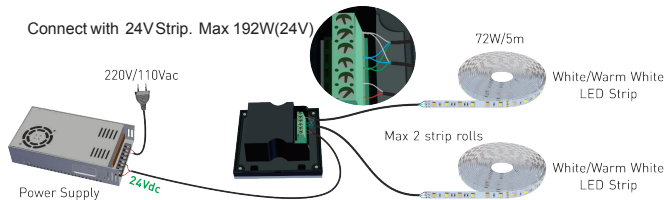


4. Key Functions:

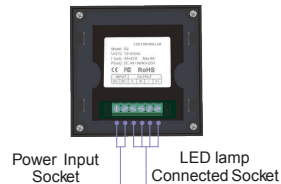


* Long press to turn on/off the tone.

6. Wiring Diagram:



5. Green Block:



PILOTdrive-3 touch panel user guide



PILOTdrive-3



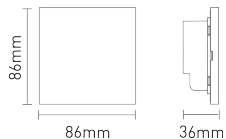
1. Technical Specs:

- Input Voltage: 12-24V dc
- Load Current: 4A×3CH Max 12A
- Max Output Power: 144W/288W(12V/24V)
- Working Temp.: -30°C~55°C
- Dimensions: L86×W86×H36(mm)
- Package Size: L113×W112×H50(mm)
- Weight(G.W): 208g

2. Installation Instruction:



3. Product Size:



4. Key Functions:

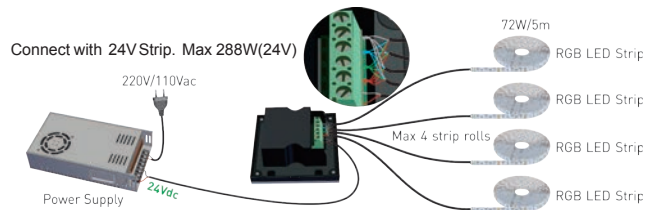


* Long press to turn on/off the tone.

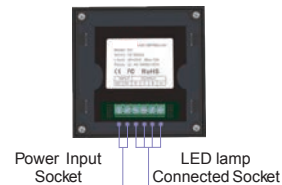
The Changing Mode (Press to Switch):

- A. Static Red B. Static Green C. Static Blue D. Static Yellow E. Static Purple F. Static Cyan
- G. Static White H. RGB Jumping I. 7 Colors Jumping J. RGB Smooth K. 7 Colors Smooth

6. Wiring Diagram:



5. Green Block:





PILOTdrive-4



1. Technical Specs:

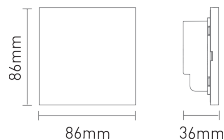
- Input Voltage: 12-24Vdc
- Load Current: 4A×4CH Max 16A
- Max Output Power: 192W/384W(12V/24V)
- Working Temp.: -30°C~55°C

- Dimensions: L86×W86×H36(mm)
- Package Size: L113×W112×H50(mm)
- Weight(G.W): 208g

2. Installation Instruction:



3. Product Size:



4. Key Functions:

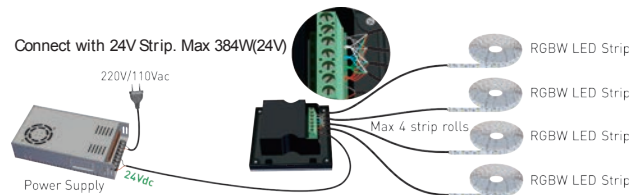


* Long press to turn on/off the tone.

The Changing Mode (Press to Switch):

- A. Static Red B. Static Green C. Static Blue D. Static Yellow E. Static Purple F. Static Cyan
G. Static White H. RGB Jumping I. 7 Colors Jumping J. RGB Smooth K. 7 Colors Smooth
L. Static Black (only close RGB)

6. Wiring Diagram:



5. Green Block:

