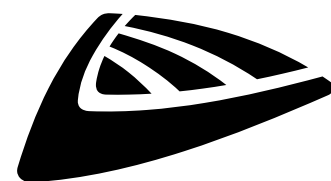


USB 1.1 REC



ENGLISH Operation Manual

Other languages can be downloaded from:
WWW.JB-SYSTEMS.EU



Version: 1.0

JBSYSTEMS



EN - DISPOSAL OF THE DEVICE

Dispose of the unit and used batteries in an environment friendly manner according to your country regulations.

FR - DÉCLASSER L'APPAREIL

Débarrassez-vous de l'appareil et des piles usagées de manière écologique Conformément aux dispositions légales de votre pays.

NL - VERWIJDEREN VAN HET APPARAAT

Verwijder het toestel en de gebruikte batterijen op een milieuvriendelijke manier conform de in uw land geldende voorschriften.

DU - ENTSORGUNG DES GERÄTS

Entsorgen Sie das Gerät und die Batterien auf umweltfreundliche Art und Weise gemäß den Vorschriften Ihres Landes.

ES - DESHACERSE DEL APARATO

Reciclar el aparato y pilas usadas de forma ecologica conforme a las disposiciones legales de su país.

PT - COMO DESFAZER-SE DA UNIDADE

Tente reciclar a unidade e as pilhas usadas respeitando o ambiente e em conformidade com as normas vigentes no seu país.

OPERATION MANUAL

Thank you for buying this JB Systems® product. To take full advantage of all possibilities, please read these operating instructions very carefully.

FEATURES

- The ultimate tool for bars, dance schools, studios, shops but also for DJs. Plays: Audio-CDs, but also CDs and USB-mass storage (USB-stick or hard drive) containing MP3 and WAV-files!
- **Record function : record from an external analog source to lossless WAV or MP3 format** (64k – 128k – 192k – 256k – 320k bit rate), even whilst playing tracks from CD or USB.
- **Record monitor function:** check your recorded signal instantly!
- **Manual or automatic recording processor:** for easy, undistorted recordings.
- The alphanumeric LCD display supports ID3V2 tags (song title, artist, album, genre & bitrate)
- Full MP3 Playback, supports both CBR and VBR bitrate modes.
- **Full featured database lookup system:** lightning fast selection of the desired tracks while the previous song is still playing! You can search on title, artist, genre, album or simply based on tracks/folders!
- Free Windows Track-Indexer software available via download!
- Jog wheel for pitch bending and precise 1/75sec frame search, also on MP3
- Improved “smart random” function with 2 different modes:
 - **TOTAL random:** plays tracks, randomly selected from the complete USB-mass storage
 - **SMART random:** plays only tracks with certain genre or from a certain artist or album (avoids mix-up of 2 completely different music styles: perfect for bars, clubs, restaurants, ...)
- IR-remote with loop, speed control, track search/select, volume, ...: **perfect for dance schools!**
- **Balanced XLR-outputs** and RCA/cinch outputs + **RCA/cinch inputs for recording.**
- Anti-shock Memory 20 seconds on CD, 100% anti-shock on USB-mass storage
- Seamless loop
- Key Lock (Master tempo)
- Instant start & auto cue function (-48dB)
- Pitch ranges: +/-4% +/-8% +/-16% also on MP3
- Full automatic beat counters
- 4 different speed scan
- Reads CD-DA, CD-R, CD-RW
- Selectable elapsed, remain and total remain time display
- Single/continuous play

BEFORE USE

- Before you start using this unit, please check if there's no transportation damage. Should there be any, do not use the device and consult your dealer first.
- **Important:** This device left our factory in perfect condition and well packaged. It is absolutely necessary for the user to strictly follow the safety instructions and warnings in this user manual. Any damage caused by mishandling is not subject to warranty. The dealer will not accept responsibility for any resulting defects or problems caused by disregarding this user manual.
- Keep this booklet in a safe place for future consultation. If you sell the fixture, be sure to add this user manual.
- To protect the environment, please try to recycle the packing material as much as possible.

Check that the carton contains the following items:

- USB1.1 REC player
- Operating instructions
- Pair of cinch cords
- IR-Remote controller
- 1 power cord

SAFETY INSTRUCTIONS:



CAUTION
RISK OF ELECTRIC SHOCK
DO NOT OPEN



CAUTION: To reduce the risk of electric shock, do not remove the top cover. No user-serviceable parts inside. Refer servicing to qualified service personnel only.



The lightning flash with arrowhead symbol within the equilateral triangle is intended to alert the user or the presence of un-insulated "dangerous voltage" within the product's enclosure that may be of sufficient magnitude to constitute a risk of electric shock.



The exclamation point within the equilateral triangle is intended to alert the user to the presence of important operation and maintenance (servicing) instructions in the literature accompanying this appliance.



This symbol means: indoor use only



This symbol means: Read instructions



This symbol means: Safety Class I appliance



This appliance must be earthed in order to comply with safety regulations.

- To prevent fire or shock hazard, do not expose this appliance to rain or moisture.
- To avoid condensation to be formed inside, allow the unit to adapt to the surrounding temperatures when bringing it into a warm room after transport. Condense sometimes prevents the unit from working at full performance or may even cause damages.
- This unit is for indoor use only.
- Don't place metal objects or spill liquid inside the unit. No objects filled with liquids, such as vases, shall be placed on this appliance. Electric shock or malfunction may result. If a foreign object enters the unit, immediately disconnect the mains power.
- No naked flame sources, such as lighted candles, should be placed on the appliance.
- Don't cover any ventilation openings as this may result in overheating.
- Prevent use in dusty environments and clean the unit regularly.
- Keep the unit away from children.
- Inexperienced persons should not operate this device.
- Maximum save ambient temperature is 40°C. Don't use this unit at higher ambient temperatures.
- Minimum distances around the apparatus for sufficient ventilation is 5cm.
- Always unplug the unit when it is not used for a longer time or before you start servicing.
- The electrical installation should be carried out by qualified personal only, according to the regulations for electrical and mechanical safety in your country.
- Check that the available voltage is not higher than the one stated on the rear panel of the unit.
- The socket inlet shall remain operable for disconnection from the mains.
- The power cord should always be in perfect condition. Switch the unit immediately off when the power cord is squashed or damaged. It must be replaced by the manufacturer, its service agent or similarly qualified persons in order to avoid a hazard.
- Never let the power-cord come into contact with other cables!
- When the power switch is in OFF position, this unit is not completely disconnected from the mains!
- In order to prevent electric shock, do not open the cover. Apart from the mains fuse there are no user serviceable parts inside.
- **Never** repair a fuse or bypass the fuse holder. **Always** replace a damaged fuse with a fuse of the same type and electrical specifications!
- In the event of serious operating problems, stop using the appliance and contact your dealer immediately.
- Please use the original packing when the device is to be transported.
- Due to safety reasons it is prohibited to make unauthorized modifications to the unit.
- **CAUTION:** Danger of explosion if battery is incorrectly replaced. Replace only with the same or equivalent type. The battery shall never be exposed to excessive heat such as sunshine, fire, ...

INSTALLATION GUIDELINES:

- Placing and using the unit for long periods near heat-generating sources such as amplifiers, spotlights, etc. will affect its performance and may even damage the unit.
- Take care to minimize shocks and vibrations during transport.
- When installed in a booth or flight case, please make sure to have good ventilation to improve heat evacuation of the unit.
- To avoid condensation to be formed inside, allow the unit to adapt to the surrounding temperatures when bringing it into a warm room after transport. Condense sometimes prevents the unit from working at full performance.
- Choose the place where you put your installation very carefully. Avoid presence of heat sources. Avoid places with vibrations or places that are dusty and humid.
- The player will work normally when installed on a surface with max. 15° inclination.
- Be very careful while handling CDs, do not touch them with wet or dirty hands.
- Discs that are dirty must be cleaned with special designed cloth and cleaning products.
- Do not use CDs that are badly damaged (scratched or deformed) they can damage your appliance.
- To prevent fire or shock hazard, do not expose this appliance to rain or moisture.
- In order to prevent electric shock, do not open the top cover. If a problem occurs, contact your dealer.
- Do not place metal objects or spill liquid inside the player. Electric shock or malfunction may result.
- This player uses the semiconductor laser. To allow you to enjoy music at a stable operation, it is recommended to use this in a room of 5°C – 35°C.
- The compact disc player should not be adjusted or repaired by anyone except properly qualified service personnel.
- This unit may cause interference to radio and television reception.

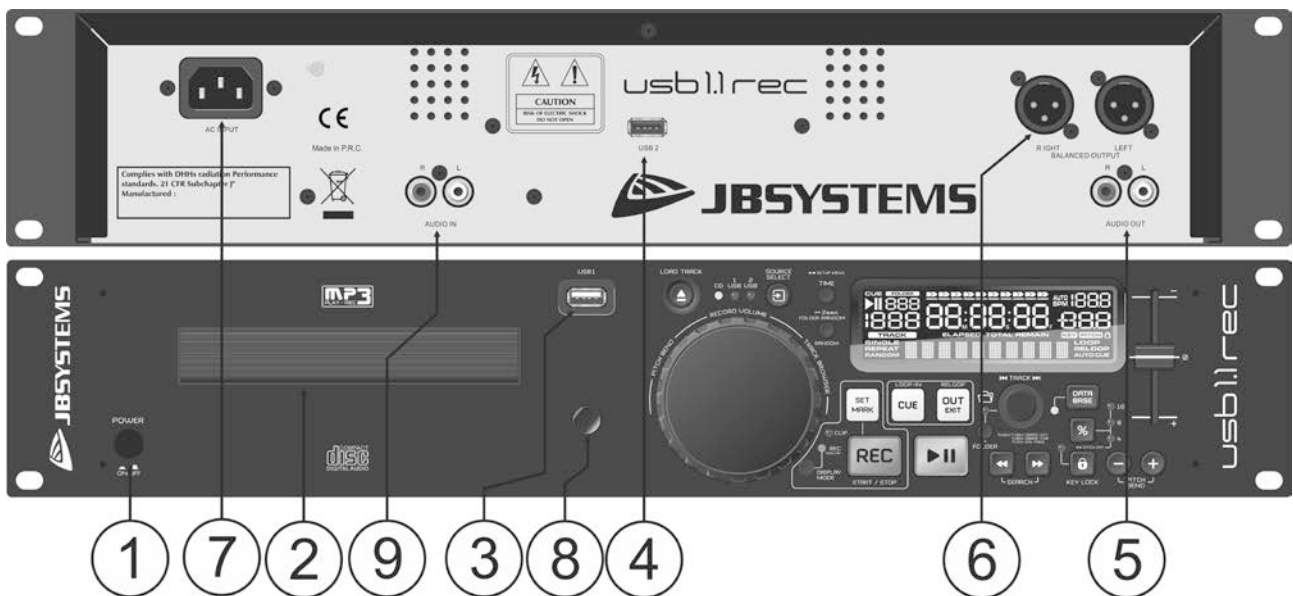
CLEANING THE PLAYER:

Clean by wiping with a polished cloth slightly dipped with water. Avoid getting water inside the unit. Do not use volatile liquids such as benzene or thinner which will damage the unit.

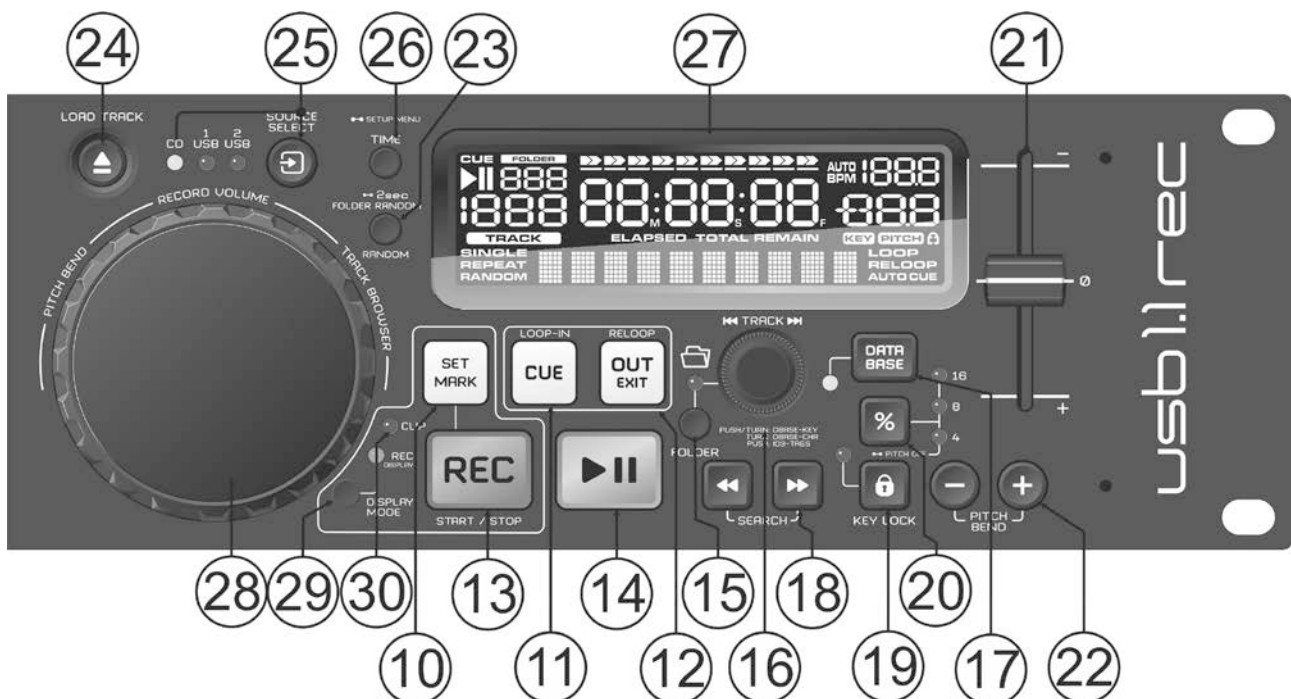
CONNECTIONS

- Use the supplied cinch cable to connect the audio output of the player with the CD or line input on your mixing unit. Use an optional cinch cable to connect the audio input of the recorder to the line output on your recording source (mixer, other CD-player,...)
- For long audio lines or professional applications you can also use the balanced XLR-outputs.
- Connect the mains cable.

CONTROLS AND FUNCTIONS



1. **POWER [ON/OFF] switch:** switches the player on and off.
2. **DISC TRAY:** Use the [OPEN/CLOSE] button to open disc tray and put the CD in place.
3. **[USB 1] connection:** this is the first (type-A) USB-connection, used to connect any USB mass storage device that was formatted in FAT or FAT32. By default this input is used to connect an occasional USB-drive like USB-sticks etc.
4. **[USB 2] connection:** this is the second (type-A) USB-connection, used to connect any USB mass storage device that was formatted in FAT or FAT32. By default this input is used to connect a hard disk.
Attention: because the power supplied by the USB-output is limited, it is highly recommended to use a hard drive with separate power supply. HDD capacity should also be limited to 500GB max.
5. **UNBALANCED AUDIO output:** Output for the audio signals from the player. Use the supplied cinch/cinch cable to connect this output to a CD/line input of your mixing unit.
6. **BALANCED AUDIO output:** the same audio signal as on the cinch outputs (5) but balanced output via XLR-connectors. To be used in case of long audio lines: use optional good quality XLR/XLR cables for optimal performance!
7. **MAINS input:** connect the player to the AC mains, using the supplied power-cord.
8. **IR-receiver:** make sure that this IR-receiver is not covered, otherwise your wireless remote will not work properly!
9. **UNBALANCED AUDIO input :** Input for the audio signals from external "line level" ($1V_{max}$) sources. Use an optional cinch/cinch cable to connect this input to the output of a CD-player or a mixer.

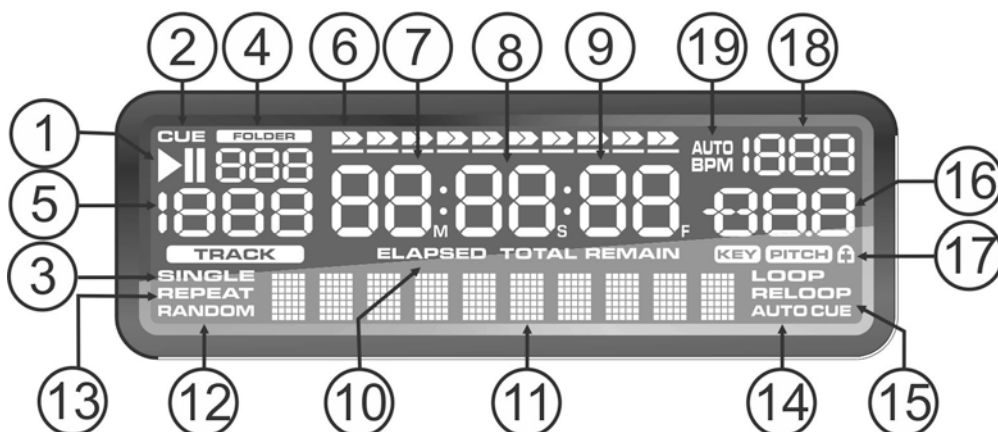


10. **[SET MARK] button:** Allows you to set a marker while recording. The recording continues on a new file.
11. **[CUE] button:** Used to set the startpoint to create a loop. Once this startpoint is set, the button can be pushed to create a [STUTTER]-effect. Keeping the button pushed will start playing the track from the startpoint. Releasing the button will stop the playing of the track. While having the button pushed you can push the [PLAY]-button (14) to continue playing the track the normal way.
12. **[OUT] button:** This button is used to set the endpoint of a loop. Push the button on the desired endpoint of the loop. It will start blinking and [RELOOP] will appear on the display. Pushing the button a second time will lit it and makes the player go out of the loop and continue playing the track. Pushing the button again will restart the programmed loop.
13. **[REC] button:** Pressing the [REC] button starts recording immediately. Pushing the button again will stop the recording.
14. **[PLAY/PAUSE] button:** every time you press the [PLAY/PAUSE] button the player changes from play to pause or from pause to play. The button blinks as long as the player is set to pause.
15. **[FOLDER] button:** changes the function of the [TRACK] knob (16) while the search key is set to "Std" (standard track/folder search without Track-Indexer database).

- **While the LED is off:** the [TRACK] knob is used to browse the tracks of the selected folder.
 - **While the LED is on:** the [TRACK] knob is used to browse the folders on the USB-drive.
- When pushing the button for 2 seconds, it activates the [REPEAT] function. Pushing again for 2 seconds de-activates the [REPEAT] function.
16. **[TRACK] knob:** this knob has different functions (also see the chapter [HOW TO USE]):
- **CDs or no Track-Indexer database:** depending on the status of the [FOLDER] button (15) you can browse tracks or folders on the CD or USB-device. To increase search speed on USB-devices with a lot of folders/tracks, you can also turn the [JOG-WHEEL] (28) while you keep the [TRACK] knob pressed.
 - **Track-Indexer database search:** (press the [DATABASE]-button (17) and desired search key)
 - **Turn the knob** to select the first character of the string you're looking for, after that use the [JOG-WHEEL] to search for the desired track.
 - **Press the knob while you turn it** to change the search key in the database, you can search the keys:
 - **[Art]:** search for "artist names" in alphabetical order (default search key)
 - **[Alb]:** search for "album names" in alphabetical order
 - **[Gen]:** search for "Genres" in alphabetical order
 - **[Std]:** don't use the Track-Indexer database system, just folders and tracks manually.
 - **[tit]:** search for "title names" in alphabetical order
 - **During playback:** press the knob to see the different ID3-tags on the display:
 - **Press 1x:** Artist name of the current track is shown
 - **Press 2x:** Album name of the current track is shown
 - **Press 3x:** Genre of the current track is shown
 - **Press 4x:** Bitrate information of the current track is shown
 - **Setup menu active:** while the setup menu is active (see [TIME] button (26)) turn the knob to browse the menu, press the knob to select a menu option to change it. Please refer to chapter [SETUP MENU] for more information.
17. **[DATABASE] button:** a very important button if you want to find your next track easily and fast, even while the previous track is still playing! This button works in two different ways:
- **NEXT TRACK function:** will be used while searching on CDs and mass storage devices that don't have the "Track-Indexer database system" files installed. You can only search on track and folder numbers.
 - **DATABASE function:** will be used while searching mass storage devices that have the "Track-Indexer database system" files installed. You can alphabetically search on artist, track title, genre or album. Very fast and no need for you to know where your files are located!
Once you have found the desired song, just press the [LOAD TRACK]-button (24) to load the track.
For both functions, please refer to chapter [HOW TO USE] for more information.
18. **[SEARCH] buttons:** used to search quickly inside a track.
19. **[KEY LOCK] Button:** (Master tempo) activates the Pitch Lock function. This function allows you to make adjustments to a track's speed using the PITCH-slider (21) without altering the tonal pitch.
20. **[PITCH (%)] button:** press this button to turn the speed function on. Press several times to select one of the 3 different pitch ranges (+/-4%, 8%, 16%). Press this button +/- 2seconds to turn the speed function off.
21. **[PITCH] slider:** Press the PITCH button, so the pitch range LED is lit. The speed can be adapted up to +/-16% by moving the fader. The speed will not change when the pitch range LED is off.
22. **[PITCH BEND] buttons:** The speed rises while the "+ button" is pressed and returns to the original pitch when the button is released. The speed drops when the "- button" is pressed and returns to the original pitch when the button is released. These buttons can be used to synchronize the beats of 2 tracks.
23. **[RANDOM] button:** you can select 2 different random play functions.
- **[TOTAL] random:** press the [RANDOM] button shortly until the word [RANDOM] in the LCD-display is lit. The player now plays tracks, randomly selected from the complete USB-mass storage.
 - **[SMART] random:** you can choose to play only tracks from a certain directory, only tracks from a certain genre, or even only tracks from a certain album or artist:
 - **Play tracks only from 1 directory:** first choose [search-key = Std] (folders/tracks). Now you have to select a directory, then press the [RANDOM] button for +/-2seconds until [RANDOM] starts blinking in the display. The [USB1.1 REC] now plays only tracks from the selected directory.

- **Play tracks only from a certain genre/artist/album:** choose the right search-key and select a track that corresponds to the desired genre, artist or album. After pressing the [RANDOM] button for +/-2seconds, the player will only play tracks with the same genre, artist or album as the track you're currently playing. (avoids mix-up of 2 completely different music styles: perfect for bars, clubs, restaurants, ...) See chapter [HOW TO USE] for examples.
 - **Directory random:** you can choose to play only tracks from a certain directory: first you have to select this directory, then press the [RANDOM] button for 2 seconds until the word [RANDOM] in the LCD-display starts blinking. The player now plays only tracks from the selected directory. (avoids mix-up of 2 completely different music styles: perfect for bars, clubs, restaurants, ...) See chapter [HOW TO USE] for examples.
24. **[OPEN/CLOSE/LOAD TRACK] button:** used for two different functions.
 - **Load a track from USB-drive:** when the [DATABASE]-button (17) is used to lookup the next track, just press the [LOAD TRACK] button to load the selected track.
 - **Load/eject CDs:** press this button to open and close the disc tray. This button is disabled during playback. If the tray is not closed after 60sec. It will close automatically to prevent damage.
 25. **[SOURCE SELECT] switch:** use this button to select the desired audio source: CD, USB1 or USB2. You can only select another source while the player is in stop or pause. The leds marked USB1 or USB2 blink when a recording is saved to the selected USB-memory.
 26. **[TIME] Button:** has different functions:
 - **Change time display:** The TIME button switches between elapsed playing time, remaining time in a selection and total remaining time of the disc. (standard = remaining /track) The "total remaining time of the disc" is not available on MP3-tracks.
 - **Open setup menu:** press the TIME button for about 3seconds.
 - **Close setup menu:** press the TIME button shortly to leave setup.
 27. **LCD DISPLAY:** Shows all important information needed during playback. Refer to the next chapter for more information.
 28. **[JOG WHEEL]:** This jog wheel serves 3 functions depending on the mode you are working in.
 - The jog wheel acts as a slow frame search (1/75sec) control when the CD is not playing but either paused or set to a cue point. To set a new cue point, spin the wheel then press [PLAY] (14) or [LOOP IN/CUE] (11) when you have determined the proper position. Press [LOOP IN/CUE] to return to the [CUE POINT].
 - If the track is playing the jog wheel temporarily bends the pitch of the music by rotating the wheel clockwise to speed it up or counterclockwise to slow it down. The amount of pitch change is determined by the speed of rotation.
 - During [DATABASE] lookup mode, the jog wheel is also used to browse the tracks at high speed.
 - During recording: Used to adjust the analog input level (when manual recording was selected)
 29. **[REC DISPLAY] Button :** you can switch the display between RECORD and PLAYBACK mode at any moment. This makes it possible to simultaneously play a track while recording another.
 - **RECORD mode:** display shows information relative to your current recording.
 - **PLAYBACK mode:** display shows information relative to the track that is currently played.
 30. **[Clip] LED :** blinks when the level from the recording signal is too high (distorted). In that case please lower the input level using the JOG WHEEL (28).

LCD DISPLAY

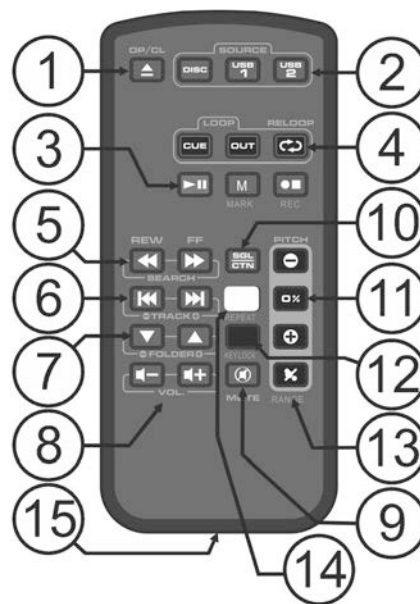


1. **[PLAY/PAUSE] indicators:** displays the status of the player.
2. **[CUE]:** appears when the master cue point is programmed.
3. **[SINGLE]:** appears when the unit is set to play just one track at a time. When it is not shown, the player plays all tracks continuously.
4. **[FOLDER/SEARCH KEY] indicator:** the information depends on the lookup mode you selected.
 - **Standard lookup:** (no Track-Indexer database) the current folder number is shown.
 - **Database lookup:** the current search key (Artist, title, Album or Genre) is shown.
5. **TRACK indicator:** shows the number of tracks available in your current selection.
 - **Standard lookup:** (no Track-Indexer database) the track numbers in the current folder are shown.
 - **Track-Indexer lookup:** the track numbers that correspond to your Track-Indexer pre-selection.
6. **[TIME BAR]:** shows either remaining or elapsed time. Starts flashing at the end of each track to alert the user to take action. When changing to REC display, the time bar will act as a recording level meter.
7. **MINUTE:** Shows "minutes" time information of current track.
8. **SECOND:** Shows "seconds" time information of current track.
9. **FRAME:** Shows "frame" time information of current track. (1 frame = 1/75th sec.)
10. **[ELAPSED, REMAIN]:** indicates that the time shown on the display is the elapsed or remaining time for the playing track.

Note: for MP3 files it's not possible to show the total remaining time for all tracks on the CD or USB-storage.
11. **ALPHANUMERIC DISPLAY:** Shows the names of folders and ID3-tags of MP3 tracks. Acts as an output level indicator when changing the output volume.
12. **[RANDOM]:** Is lit while the player is set to [total random] mode, blinks while the player is set to [directory random] mode.
13. **[REPEAT]:** indicates that the repeat function is activated, for more information see [REPEAT]-button (14) on the remote control.
14. **[AUTO CUE]:** appears when the [auto cue] function is active.
15. **[RELOOP/RELOOP]:** [LOOP] shows when a loop is programmed. When a loop is programmed and currently playing, the [RELOOP] indicator is flashing.
16. **[PITCH] DISPLAY:** shows the actual percentage of speed change, selected with the PITCH slider (21).
17. **[KEYLOCK]:** is shown when the pitch lock function (Master Tempo) is active.
18. **[BPM] DISPLAY:** shows the output of automatic beat-counter, measured in beats per minute.

IR-REMOTE CONTROLLER

1. **[OPEN/CLOSE]-button:** same functionality as the [OPEN/CLOSE]-button (24) on the player.
2. **[SOURCE]-buttons:** same functionality as the [SOURCE SELECT]-button (25) on the player.
3. **[PLAY-PAUSE/MARK/REC]-buttons:** same functionality as the [PLAY-PAUSE/MARK/REC]-buttons (10+13+14) on the player. [MARK]-button sets a marking point in your recording file and continues recording in a new file.
4. **[LOOP]-buttons:** same functionality as the [LOOP IN/OUT/RELOOP]-buttons (11+12) on the player.
5. **[SEARCH]-buttons:** same functionality as the [SEARCH]-buttons (18) on the player.
6. **[TRACK]-buttons:** same functionality as the [TRACK]-knob (16) on the player with folder switch off.
7. **[FOLDER]-buttons:** same functionality as the [TRACK]-knob (16) on the player with folder switch on.
8. **[VOLUME]-buttons:** used to change the output volume.
9. **[MUTE]-button:** switches the output volume on/off.
10. **[SGL/CTN]-button:** same functionality as the single/continuous option in the setup menu.
11. **[PITCH]-buttons:** with the +/--buttons you can change playback speed, maximum speed change is set with the [PITCH]-button (20) on the player or with the [PITCH RANGE]-button (13): one of the speed range LEDs on the player must be lit!
12. **[KEY LOCK]-button:** same functionality as the [KEY LOCK]-button (19) on the player.
13. **[PITCH RANGE]-button:** press this button to choose a pitch range (4% - 8% - 16%). Press this button for 2 seconds to disable.
14. **[REPEAT]-button:** press this button to activate the repeat function. Two possibilities are available:
 - **[REPEAT] DIRECTORY:** when on the display only [REPEAT] is lit, the current directory is repeated.
 - **[REPEAT] TRACK:** when on the display both [REPEAT] and [SINGLE] are lit, the current track is repeated.
15. **Battery compartment:** Replace only with CR2025 or equivalent 3V type. Danger of explosion if battery is incorrectly replaced.



SETUP MENU

To increase flexibility some parameters of the [USB1.1 REC] can be changed in the setup menu.

- To enter the [SETUP] menu, press the [TIME] button (26) for about 3 seconds.
 - Use the [TRACK] knob (16) to browse the different menu options of the main menu.
 - Press the [TRACK] knob (16) to select the menu option you want to change:
 - Use the [TRACK] knob (16) to change the parameters of the selected menu option.
 - If the menu option has submenus, use the [JOG-WHEEL] (28) to browse these.
 - Press the [TRACK] knob (16) again to return to the main menu.
- ➔ **To save your settings: choose menu option B [(EXIT & SAVE)] and press the [TRACK] knob ←**

1. **[SLEEP TIME]:** to extend the lifetime of the laser, the unit goes automatically to sleep mode while not used for 15 minutes (default). In this menu option you can change, the time it takes to enter sleep mode:
 - ⇒ Turn the [TRACK] knob (16) to select the desired time: [No SLEEP] → 120 minutes.
 - Press the [TRACK] knob (16) to save the new value and return to the main menu.
2. **[Line Mode]:** you can configure how the text line shows information that is longer than 10 characters. You can choose 3 different modes + some extra fine-tuning:
 - ⇒ There are 3 submenus: push the [TRACK] knob (16) to select a submenu.
 - **[Mode = 1]:** text line scrolls and waits for a certain time before scrolling starts again.
 - Turn the [JOG WHEEL] (28) to select the desired value:
 - **[Dis. = 0.5s → 12.0s]:** waiting time in seconds.
 - **[Run = 50ms → 2000ms]:** 50ms = fast speed / 2000ms = slow speed
 - **[Mode = 2]:** text line scrolls only one time, then stops.

Turn the [JOG WHEEL] (28) to select the desired value:

- **[Dis. = 0.5s → 12.0s]:** waiting time in seconds.
 - **[Run = 50ms → 2000ms]:** 50ms = fast speed / 2000ms = slow speed
- **[Mode = 3]:** text line scrolls continuously.

Turn the [JOG WHEEL] (28) to select the desired value:

- **[Dis. = 0.5s → 12.0s]:** waiting time in seconds.
- **[Run = 50ms → 2000ms]:** 50ms = fast speed / 2000ms = slow speed

Press the [TRACK] knob (16) to save the new values and return to the main menu.

3. **[SGL/CONT]:** You can choose between “single track mode” and “continuous play”.
 - **Continuous:** the complete CD/USB-drive will be played without interruption. (used in pubs)
 - **Single:** player stops at the end of each track and waits at the beginning of the next track. (mostly used by deejays)

⇒ Turn the [TRACK] knob (16) to select the desired mode. Press the [TRACK] knob (16) to save the new value and return to the main menu.
 4. **[AUTOCUE MODE]:** while switched on the player stops at the end of each track and waits at the first music note of the next track. This means that badly indexed CDs will not interfere with the instant start capabilities of the player, a very useful feature for deejays!
 5. **[REC. USB]:** you can select to which USB-slot (USB1 or USB2) the recording would be sent.
 6. **[REC. Bitrate]:** you can choose the quality of your recording (WAV – MP3). Turn the [TRACK] knob (16) to select the desired recording quality: WAV, MP3-quality : from 64 kbps (lowest quality) up to 320 kbps (highest quality).
 7. **[REC. Input] :** you can choose [AUTO] or [MANUAL]. [AUTO] limits the recording level automatically to 0dB.
 8. **[OUT Mode] :** you can choose [PLAYBACK] or [REC MON]. **ATTENTION! : when you put the [USB 1.1 REC] in [REC. MON] mode the playback signal will be interrupted and you will hear the recording signal on the output.**
 9. **[Version / upgrading]:** use this option to check and/or upgrade the firmware versions.
 - ⇒ Turn the [TRACK] knob (16) to select the 2 firmware parts:
 - **[CON: xx]:** shows the version of the control firmware
 - **[DSP: xx]:** shows the version of the DSP firmware
 - **[Upgrade]:** blinks when the unit is ready to check if there are new firmware versions available. See “FIRMWARE UPGRADING” for more information.

Press the [TRACK] knob (16) to return to the main menu.
- A. [Load defaults]:** If you really messed up things, you can still reload the default setting!
- ⇒ While [Load Defaults] is shown on the display: press the [TRACK] knob (16) to load the defaults.
- B. [Exit & Save]:** if you want your changes to the setup menu to be permanently saved (also after switching the unit off) you **MUST** use this option!
- ⇒ Press the [TRACK] knob (16) : the display shows [Saving] and exits the setup menu.

FIRMWARE UPGRADING

We strongly suggest to regularly check the [USB1.1 REC] product page on www.jbsystems.be to see if new firmware updates are available. Upgrading firmware should always be done very carefully!

- Download the file containing the upgrade file(s)
- Read the instructions and follow them strictly, otherwise you could damage your equipment...
- Put the files on an **EMPTY (important!) USB-stick.**
- Press the [TIME] button (26) for about 3seconds to enter the setup menu.
- Use the [TRACK] knob (16) to browse to menu option **[9. Version]**.
- Turn the [TRACK] knob (16) until the display shows [Upgrade].
- Use the [SOURCE SELECT] button (25) to select USB1 input (3).
- Insert the USB-stick with firmware files in USB1-input (3)
- ➔ Upgrading will start automatically: **WAIT (!)** until the upgrading process is finished. **NEVER** turn the player off while upgrading the software!!!
- If the display asks you to turn off the unit: turn the unit off, wait 3seconds and turn it back on.
- Check if the software version corresponds to the version marked in the readme file that came with the update.

INSTALLING THE TRACK-INDEXER SOFTWARE

The USB1.1 REC works perfectly without the Track-Indexer database files but if you want to search your tracks easily and lightning fast than you should install the Track-Indexer software on your computer! Please note that the program currently only works under Windows (XP, Vista, Win7, Win10). **To be sure that you always have the latest version, you can download the software from the [USB1.1 REC] product page on our website.** Installing the program is very easy: just double-click the file and follow the instructions on your screen.

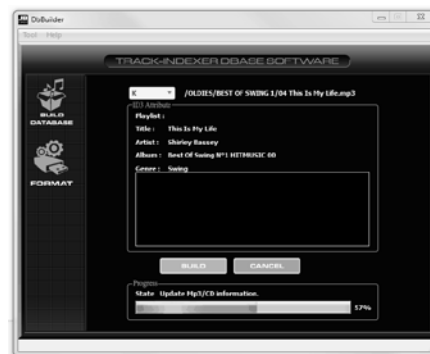
USING THE TRACK-INDEXER SOFTWARE

Each time you add or remove tracks from your USB hard disk, you must run the TRACK-INDEXER software again to update the Track-Indexer database files!

After the installation you will see a new program directory called "JB". In this directory you will find 2 files:

- Uninstall (to uninstall the software)
- DbBuilder (to start the software)

- Connect your USB-hard drive to your PC and check which drive letter was assigned to it.
- Click on the Track-Indexer icon to start the software: the main screen is shown.
- In the upper center choose your USB-drive.
- Press the BUILD-button.
 - ➔ The software starts scanning the USB-drive for compatible audio files and extracts the ID3-tags to build the Track-Indexer database files, needed to speed up the search function on the player. Once the progression bar on the bottom is full, the database building process is finished and a short summary is shown.
- The program wrote the Track-Indexer files (file extensions: .DBH + .dat + .DBX) to the USB-drive so now you can remove it from your PC and connect it to the USB1.1 REC.



To achieve the best results, please always use the latest version of the Track-Indexer database software. You can find the software version at the bottom left of the "About" screen.

! IMPORTANT MESSAGE FOR VISTA USERS !

Many Vista users will not be able to run the Track-Indexer software. This problem is caused by the UAC (User Account Control) limitation, a security option limiting the user privileges in Vista. To overcome this problem, right-click the Track-Indexer program icon and choose "Run as administrator" in the popup menu. Windows will respond with the window shown on the right: just click "Allow".



HOW TO USE ...

Most of the common functions are explained in the previous chapter "controls and functions" In this chapter we talk about the functions that need a little more explanation.

SOME GENERAL FUNCTIONS:

• **SEARCH A TRACK WITH THE TRACK-INDEXER SYSTEM:**

Important: before you can use the Track-Indexer system, you should scan your USB-drive so it contains the necessary database files.

You can choose the search-key at any moment by pressing the [TRACK]-knob (16) while you turn it. You can search for [**Art**](artist), [**tit**](title), [**Alb**](album) or [**Gen**](genre).

- Press the [DATABASE]-button (17) to start the lookup function → the first character of the list you want to search is blinking in the display.
- Turn the [TRACK]-knob (16) to change the first character.
 - **Selected search-key is [tit]:** turn the [JOG WHEEL] (28) to browse the list of titles, starting with the selected first character.
 - **Selected search-key is NOT [tit]:** see the example below for search-key = [**Art**](artist)
 - First turn the [JOG WHEEL] (28) while you keep the [TRACK]-knob (16) pressed to browse the list of artists, starting with the selected first character.
 - Once you have selected the desired artist, stop pressing the [TRACK]-knob (16) while you continue turning the [JOG WHEEL] (28): now you can browse all the titles from this artist, in alphabetical order.
- Once you have found the right track: press the [LOAD TRACK]-button (24).

• **SEARCH A TRACK WITHOUT THE TRACK-INDEXER SYSTEM:**

Press and turn the [TRACK]-knob (16) to select [**Std**](standard lookup system). If the USB-drive has no Track-Indexer files, the player automatically selects the standard lookup system. You have two options:

Option 1:

Simply use the combination of [FOLDER]-button and [TRACK]-knob to browse the different directories.

Option 2:

- Press the [DATABASE]-button (17) to start the lookup function → both the [FOLDER] and [TRACK] displays start blinking.
- Turn the [TRACK] knob (16) to browse the folders. (when the folder LED = on, you will see the folder names while browsing)
- Turn the [JOG WHEEL] (28) to browse the selected folder at high speed.
- Once you have found the right track: press the [LOAD TRACK]-button (24).

Remark: if you want to browse you folders/tracks at high speed, you can use this method:

- **Browse folders:** turn the [JOG-WHEEL] while you keep the [TRACK]-knob pressed (folder LED = on)
- **Browse tracks:** turn the [JOG-WHEEL] while you keep the [TRACK]-knob pressed (folder LED = off)

• **RECORDING TO USB:**

To select the desired USB-slot and recording quality: check the chapter [SETUP MENU], points 5 + 6.

- Insert a USB-memory in the selected USB-slot.
- To start a recording: push the [REC] button (13) or simply push the REC-button on the IR-remote. Recording starts immediately to the assigned USB-slot. The display shows [Save to RECxxxx.mp3], followed by [RECORDING]. The corresponding USB-led (25) blinks as long as the recording continues.
- To stop recording: push the [REC] button again, the USB-led (25) stops blinking.

Repeat the above actions as often as you like to make new recordings.

Later you can always use a PC to change the original name of the MP3-file and add ID3-tags if needed.

You can change the display mode by pushing the [REC DISPLAY] button (29) to view the recorded track number and the level of the incoming signal on the time bar (6 on the Display).

The [CLIP] led (30) blinks when the level of the recording signal is too high (DISTORTION!).

• **SLEEP MODE:**

When source select is set to CD, the CD player automatically shuts off the transport and laser after about 5~120 minutes (selectable in the setup menu), while in pause or cue mode. This extends the life of your

motor drive and laser. During sleep mode the display shows the word [SLEEP]. To wake up the player, just press the cue or play button, the display turns to normal and is ready to receive instructions.

- **TOTAL RANDOM ON A USB-drive:**

This is the simple random function where any track on your USB-drive can be played randomly:

- Open the fader for the USB1.1 REC on your audio mixer.
- Press the [SOURCE SELECT]-button (25) to choose one of the USB-drives.
- Press the [RANDOM]-button (23) shortly until the word [RANDOM] in the display is lit.
- Press the [PLAY]-button (14) to start random playback.

- **“SMART” RANDOM ON A USB-drive:**

This is the “smart” random function where you have full control over which folder, genre, album or artist you want to play in your random selection, perfect for background music in restaurants, shops, clubs & bars without a dj. This is how it works:

- Open the fader for the [USB1.1 REC] on your audio mixer.
- Press the [SOURCE SELECT]-button (25) to choose one of the USB-drives.

PLAY ONLY TRACKS FROM 1 FOLDER

- Press & turn the [TRACK]-knob (16) to select the [Std] search-key.
- Press the [FOLDER] button (15), the display will show the currently selected directory name.
- Turn the [TRACK] knob (16) to select the directory you want to play files from.
- Press the [RANDOM]-button (23) for about 2 seconds until [RANDOM] starts blinking in the display.
- Press the [PLAY]-button (14) to start random playback only from the selected folder.

PLAY ONLY TRACKS FROM 1 GENRE

- Press & turn the [TRACK]-knob (16) to select the [Genre] search-key.
- Press the [FOLDER] button (15), the display will show the currently selected genre.
- Turn the [TRACK] knob (16) to select the first letter of the genre you want to choose.
- Press the [RANDOM]-button (23) for about 2 seconds until [RANDOM] starts blinking in the display.
- Press the [PLAY]-button (14) to start random playback only from the tracks of the selected genre.

***Remark1:** to play only tracks from a certain artist or album, just repeat the actions but select the artist or album search-key.*

***Remark2:** please note that the [SMART] random function will only work properly on condition that your ID3-tags are well maintained. A perfect “freeware” ID3-tag editor for this task is called “MP3TAG” and can be downloaded from www.mp3tag.de !*

- **PITCH BENDING:**

This function is used to synchronize the beats of two tracks. This can be done in two ways:

- **[PITCH BEND] buttons:** The speed increases or decreases respectively as long as the [PITCH BEND+] or [PITCH BEND-] buttons (22) are pressed.
- **[JOG WHEEL]:** During play mode the [JOG WHEEL] (28) will temporarily bend the pitch of the music by turning the [JOG WHEEL] clockwise to speed up or counterclockwise to slowdown. The rotation speed the [JOG WHEEL] determines the percent of pitch bend.

- **PLAYING/RECORDING CD-R and CD-RW:**

Apart from normal audio CD's the [USB1.1 REC] can play both CD-R (CD recordable) and CD-RW (CD rewriteable). Please note that you should always use the “disc at once” and “track at once” disc writing options! Although the [USB1.1 REC] is capable of reading CD-R and CD-RW recorded at higher speeds, we suggest not using recording speeds more than x12 to increase readability. Always buy good quality brands for CD-R and CD-RW!

If the disc is multi session, it will only play the first session:

- if the first session is CD-DA you can only play CD-DA tracks.
- if the first session is MP3 you can only play MP3 files.

ABOUT LOOPS:

- **CREATE A LOOP:**

While a track is playing, press the [CUE] button (11) to program the start point of the loop. Now press the [OUT] button (12) to program the endpoint of the loop. Then press the [PLAY]-button (14) to start the loop.

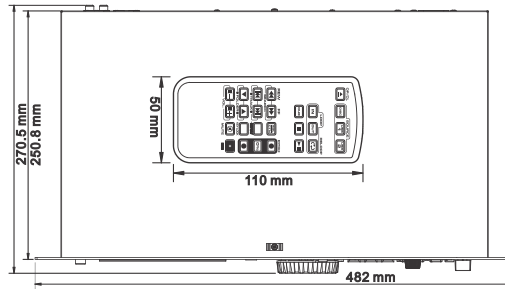
(With some practice you will be able to create perfect loops!) While the loop is playing, you can press the [OUT] button again to exit the loop and continue the rest of the track.

- **RESTART A LOOP:**

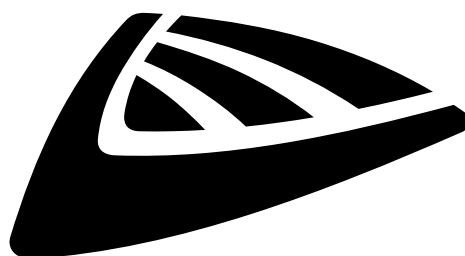
When a loop is programmed and you left it by pressing the [OUT] button, just press the [OUT] button again to restart the loop (RELOOP).

SPECIFICATIONS

Power Supply:	AC 100-240V 50/60Hz, USB port: 5Vdc – 0.5A
Power Consumption:	13W
Battery for remote :	CR-2025 (3V)
Output level (+/-0.5dB @ 1kHz,0dB):	CD: 2.0Vrms USB: 2.0Vrms
Input level for recording :	1KHZ / 4dBV +/-2dBV (AUTO) 1KHZ / 0dBV +/-2dBV (MANUAL)
Frequency resp. (+/-0.4dB / +/-0.2@0dB):	CD: 17-20.000Hz USB: 17-16.000Hz
THD + noise (@ 1kHz, 0dB):	CD: 0.008% USB: 0.007%
S/N Ratio (@ 1kHz, 0dB (IHF-A weighted):	CD: >126dB USB: >85dB
CD Short access time (next track):	<2sec
CD Long access time (track 1 → 20):	<4sec
CD Electronic tracking:	Full automatic digital tracking.
MP3 FORMAT:	
Possible file extensions:	.mp3 ~ .MP3 ~ .mP3 ~ .Mp3 ~ .WAV
ISO9660:	max. 63 character style
Joliet:	max. 63 character style
CD-ROM sector format:	mode-1 only
USB file system:	FAT 12/16/32
Max. Hard disk capacity:	500GB
Max. Folders:	CD: 255 USB: 999
Max. Tracks / Folder:	CD: 255 USB: 999
Max. Files:	CD: 999 USB: 9999 (Track Indexer software)
MP3 FORMATS PLAYBACK:	
MPEG1 Layer3 (ISO/IEC11172-3):	mono / stereo sampled at: 32 - 44,1 - 48kHz
Bitrates:	64 – 320 Kbps
Bitrate modes:	CBR (Constant Bitrate), VBR (Variable Bitrate) or Xing
MPEG2 Layer3 (ISO/IEC13818-3):	mono / stereo sampled at: 16 – 22,05 - 24kHz
Bitrates:	64 – 160 Kbps
Bitrate modes:	CBR (Constant Bitrate), VBR (Variable Bitrate) or Xing
MPEG2,5 Layer3:	mono / stereo sampled at: 8 – 11,025 - 12kHz
Bitrates:	64 – 160 Kbps
Bitrate modes:	CBR (Constant Bitrate), VBR (Variable Bitrate) or Xing
MP3 FORMATS RECORDING:	
MPEG1 Layer3 (ISO/IEC11172-3):	stereo sampled at: 44,1kHz
Bitrates:	64 – 320 Kbps
Bitrate mode:	CBR (Constant Bitrate)
Weight:	4,35kg
Dimensions:	482mm (W) X 270.5mm (D) X 88.8mm (H)



Every information is subject to change without prior notice
You can download the latest version of this user manual on our website: www.jb-systems.eu



JB SYSTEMS

MAILING LIST

EN: Subscribe today to our mailing list for the latest product news!

FR: Inscrivez-vous à notre liste de distribution si vous souhaitez suivre l'actualité de nos produits!

NL: Abonneer je vandaag nog op onze mailinglijst en ontvang ons laatste product nieuws!

DE: Abonnieren Sie unseren Newsletter und erhalten Sie aktuelle Produktinformationen!

ES: Suscribete hoy a nuestra lista de correo para recibir las últimas noticias!

WWW.JB-SYSTEMS.EU

Copyright © 2016 by BEGLEC NV

t Hofveld 2C ~ B1702 Groot-Bijgaarden ~ Belgium

Reproduction or publication of the content in any manner, without express permission of the publisher, is prohibited.