

# LED PAR 36 RGB DMX

## User Manual



## 1. Package

Color Picker – 1pcs

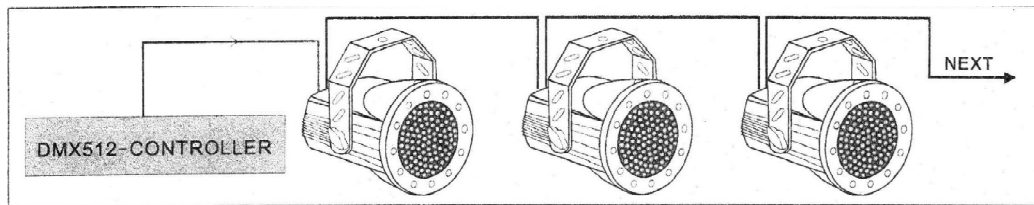
Operation Instruction – 1pcs

## 2. Assembling

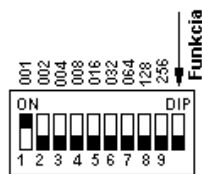
Hang the Color Picker on the frame and adjust to a right angle.

Connect signal wire. Plug one end of the signal wire into INPUT socket on the rear of the projector system. The other end into OUTPUT which is signal output of DMX 512. Feet 1, 2 and 3 of signal input socket (1- Ground, 2- Data-, 3- Data+)

Please refer to the picture below.

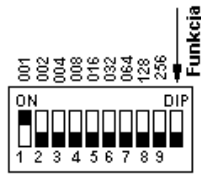


## 3. Setup state of automation, method of dialing address:



ON	OFF	FUNCTION
1, 2, 3	4, 5, 6, 7, 8, 9, 10	RED lasting lighted
3, 4, 5	1, 2, 3, 7, 8, 9, 10	GREEN lasting lighted
7, 8	1, 2, 3, 4, 5, 6, 9, 10	BLUE lasting lighted
7, 9	1, 2, 3, 4, 5, 6, 8, 10	Transform 7 colors automatically
1,9	2, 3, 4, 5, 6, 7, 8, 10	Flash frequently from red, green, blue

#### 4. Setup state of DMX, method of dialing address:



ON	OFF	FUNCTION
1, 10	2, 3, 4, 5, 6, 7, 8, 9	Choose 1 channel
2, 10	1, 3, 4, 5, 6, 7, 8, 9	Choose 2 channel
1, 2, 10	3, 4, 5, 6, 7, 8, 9	Choose 3 channel
3, 10	1, 2, 4, 5, 6, 7, 8, 9	Choose 4 channel
.....	.....	As analogy, choose the address as you want

#### 5. Setup synchronization state of principal and subordinate machine, method for dialing address:

One set of host machine setup function by method of setting auto state and dialing address. All other coordinate machines set to DMX state on 1<sup>st</sup> channel. Each of the light should be connected in series by connect wires.

#### 6. DMX channels

Channels	Function
Channel 1	Dimmer/ Strobe
Channel 2	Red
Channel 3	Green
Channel 4	Blue

#### 7. Technical Features:

Voltage: AC220V-240V/ 50Hz-60Hz; Fuse: 0,5A

Power: 10W max at full intensity (full RGB)

Size: 19,5x 14x 14cm

Weight: 0,8kg